



# Vegetation Analytics

See the Trees through the Forest

We distill complex, big data into holistic geo-intelligence to **identify, prioritize, and monitor** vegetation surrounding your asset.

Traditional vegetation management programs cost millions of dollars per year and often fail to prevent encroachment or catastrophic loss due to wildfire or severe weather.

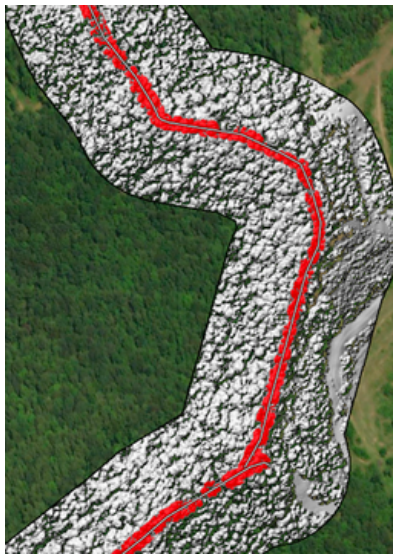
## HOLISTIC VEGETATION MANAGEMENT

At Teren, we go beyond traditional vegetation encroachment analysis to assess sub-canopy conditions. We identify and monitor soil, encroachment, hydrology, and terrain that could threaten asset performance and reliability.



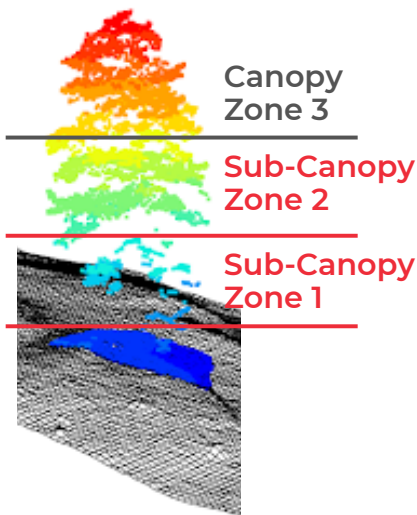
## ENSURE COMPLIANCE FOR VEGETATION RECLAMATION

Teren provides defensible LiDAR data and analytics that quantify vegetative reclamation to meet permitting requirements, ESG reporting standards, and more.



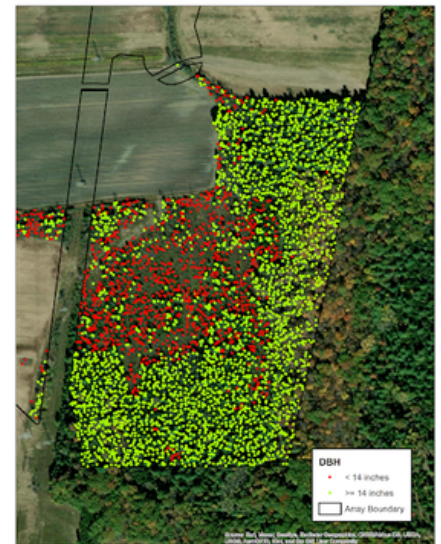
## MONITOR ENCROACHMENT

Reduce reactive spending on tree trimming crews and outages. Identify and monitor vegetation and terrain changes over time that threaten your asset.



## VISUALIZE BELOW THE CANOPY

Stay on top of maintenance, compliance, and slope stability needs by identifying vegetation height and structure as well as underlying brush.



## ACCURATELY EVALUATE TIMBER

Determine the volume and value of usable wood and which trees are candidates for trimming or clearing with Teren's Diameter at Breast Height analytic.