

## Identify, prioritize, and monitor vegetation encroachments and terrain conditions to avoid catastrophic loss.

Traditional vegetation management programs cost millions of dollars per year and often fail to prevent catastrophic loss due to wildfire or severe weather.

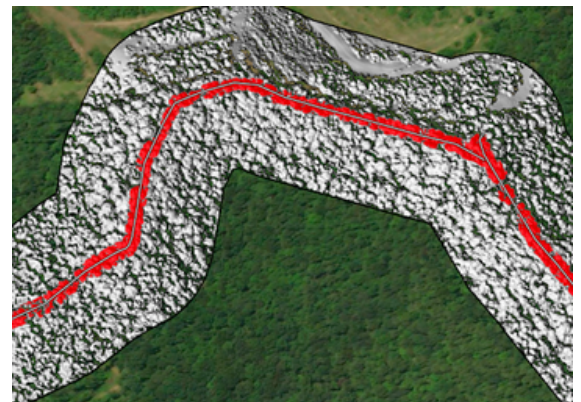
At Teren, we go beyond traditional vegetation encroachment analysis to assess sub-canopy conditions and fuel. We identify and monitor soil, hydrology, and terrain conditions that could lead to drought or threaten asset performance and reliability.

## We distill complex big data into holistic geo-intelligence for the power transmission industry.



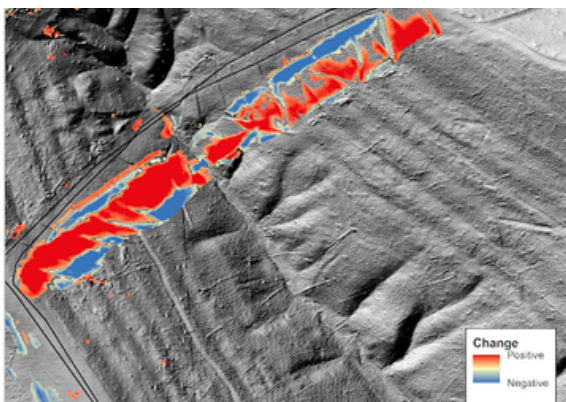
### HOLISTIC VEGETATION MANAGEMENT

Stay on top of maintenance, compliance, and slope stability needs by identifying vegetation height and structure as well as underlying brush that can fuel wildfire, terrain conditions, and soil moisture.



### STAY OUT OF THE HEADLINES

Don't let a \$10,000 fix become a \$2 million problem (and a PR nightmare). Teren predicts, identifies and ranks external threats *before* they become an incident.



### MONITOR CHANGE OVER TIME

Reduce reactive spending on fines, field crews, and outages. Identify and monitor changes to vegetation and terrain over time that can threaten asset performance.