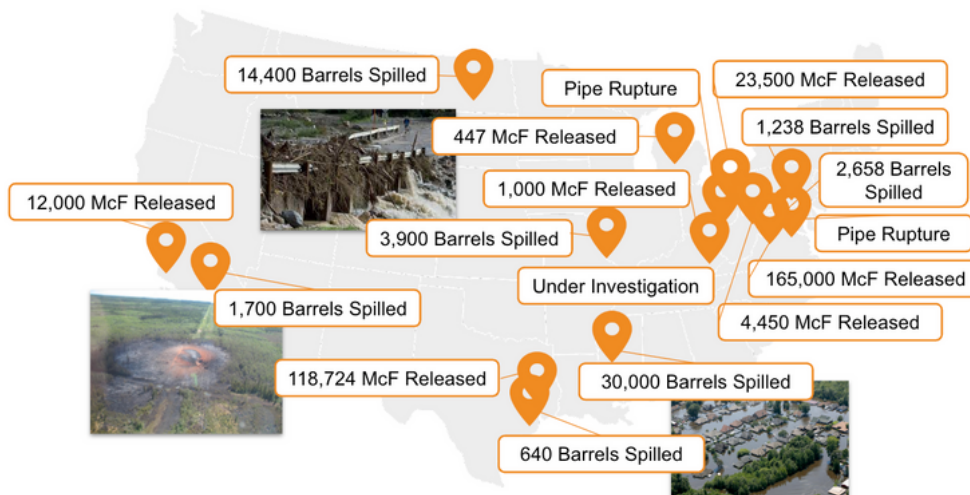


Identify Environmental & Climate-Related Threats with Teren's Expert-Enhanced Data & Analytics

Teren conducts a holistic **threat and susceptibility assessment of external forces** by evaluating your entire asset footprint against curated climate and environmental data.

Rather than spending weeks (or months) collecting, integrating, and analyzing disparate data, let Teren deliver a linear-referenced, auditable analysis in ***less than week***.

Prioritize Threats to Avoid Incidents & Negative Headlines



17 Incidents caused by External Force Threats in Last 5 Years

If you wait for external force threats to impact your asset, ***it's too late.***

Essentials allows you to identify, understand, and proactively mitigate potential and evolving environmental and climate risks to avoid incidents and negative headlines.

GET COMPLIANT & AUDIT-READY

Defensible analysis of external force threats and advanced data integration keeps you in compliance and audit-ready.

EASY INPUT INTO RISK MODELS

Our risk-ready data can be fed directly into your enterprise risk model without additional analysis or data prep.

Save Time & Money with Essentials

TRADITIONAL DESKTOP STUDY

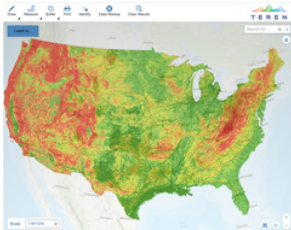
- ✗ Publicly Available Data
- ✗ Time-Intensive Data Collection
- ✗ Slow & Burdensome Analysis
- ✗ Results in Weeks or Months
- ✗ Data Prep Needed for Risk Models

TEREN ESSENTIALS

- ✓ Curated & Expert-Enhanced Data
- ✓ Data Available Immediately
- ✓ Automated Analysis
- ✓ Results in a Week
- ✓ Linear-Referenced for Risk Models

Teren's powerful processing capabilities analyze thousands of miles in minutes. We deliver a more accurate analysis faster than anyone so you can take action to protect your assets.

Essentials uses curated, expert-enhanced data and powerful processing to evaluate the risks below.

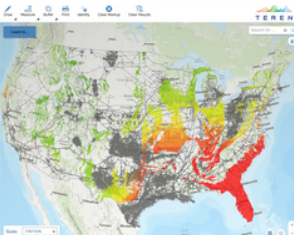
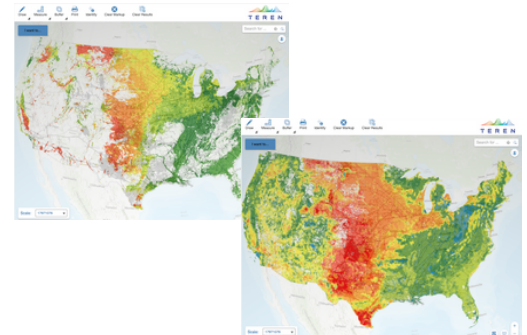


LANDSLIDE THREAT

Teren's **Landslide Threat** analytic predicts the likelihood that a geohazard will occur in a particular area based on terrain, hydrologic energy, and soil conditions.

EROSION & DEPTH OF COVER THREAT

Teren's **Depth-of-Cover Threat** analytics identify areas where agriculture, wind erosion, and road activity threaten to reduce ground cover and expose the asset to surface hazards.

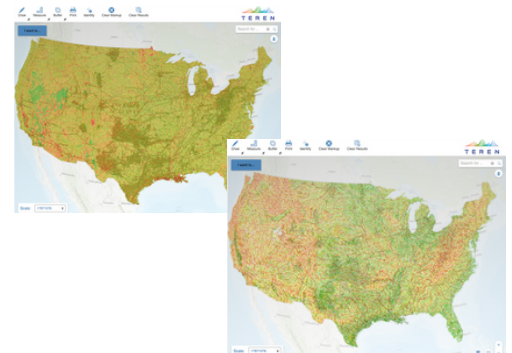


SUBSIDENCE THREAT

Teren's **Subsidence Threat** analytic identifies areas of potential ground instability due to Karst and expansive soils.

FLOODING & RIVER SCOUR THREAT

Teren's hydrology analytics, including **Coastal Flooding Threat**, **Inland Flooding Threat**, and **River Scour Threats** quantify flooding and scour risk zones based on the way that surface water moves, erodes, or accumulates on and around the asset.



WILDFIRE POTENTIAL THREAT

Teren's **Wildfire Potential Model** depicts the relative potential for wildfire occurrence at a given location within the conterminous United States.

WEATHER SUMMARY THREAT

Teren's **Weather Summary** analytic provides monthly retrospective summaries of total precipitation, average temperature, and deviations from the 30-yr average.

